



www.scottoiler.com technical@scottoiler.com +44(0)141 955 1100

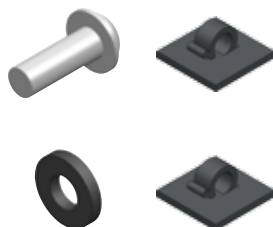
Technical Support



SA-0625 BMW S1000RR dispenser adapter

Parts List:

M8 x 16 screw
M8 x 3mm spacer
Self adhesive clip (x2)



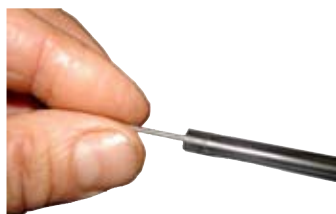
The parts enclosed allow an eSystem to be fitted on the BMW S1000RR making use of the M8 threaded paddock bobbin mountings which are integrated into the swingarm.

For model specific install guides with photographs see: www.scottoiler.com

Locate Dispenser Assembly from your eSystem kit



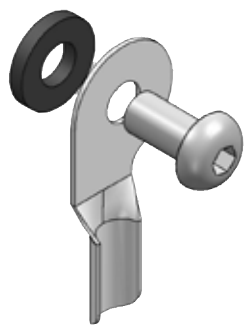
Remove the nib and then remove rigid plastic sleeve from the Dispenser Assembly.



Remove the metal rod from within the Dispenser Assembly.



Trim nib down, ensuring one end is mushroomed and the other end is slash cut. Cut down the black rigid sleeve to 30mm. Re-assemble the dispenser without the metal rod.



The 3mm spacer provided goes between the swingarm and the small dispenser plate from in your eSystem kit.



The assembly shown left is designed to mount on the inside of the Swingarm using the 8mm threaded paddock stand bobbin mounts, as shown above.



Here you can see the shortened nib, ensure the plate is secured properly with clearance from the sprocket bolts.



behind swingarm pivot



In front of rear wheel

The self adhesive clips provided allow for discrete tube routing along the bottom of the Swingarm. Ensure the surface is clean and dry before attaching the adhesive clips.

Note: It is not necessary to remove the wheel, using a long, preferably ball ended, 5mm allen key (hex wrench) it is possible to work between the wheel spokes from the opposite side of the bike.

Follow the instructions from your eSystem kit and route the delivery tubing from the dispenser to the top of the reservoir (REP), do not connect to the REP at this stage though, the delivery tubing must be primed before inserting the checkvalve.